



Photo: Annie O'Neill





A community-led, evidence-informed approach to addressing hot spots of juvenile crime through non-arrest strategies.

CLAUDIA GROSS SHADER, ASSISTANT CITY AUDITOR,
CITY OF SEATTLE, OFFICE OF CITY AUDITOR

JUNE 16, 2017



Rainier Beach, Seattle, WA


 Food Store

 Link Station


 Bus Stop

 Library

 School

 Community Center

 Hot Spot Street(s)

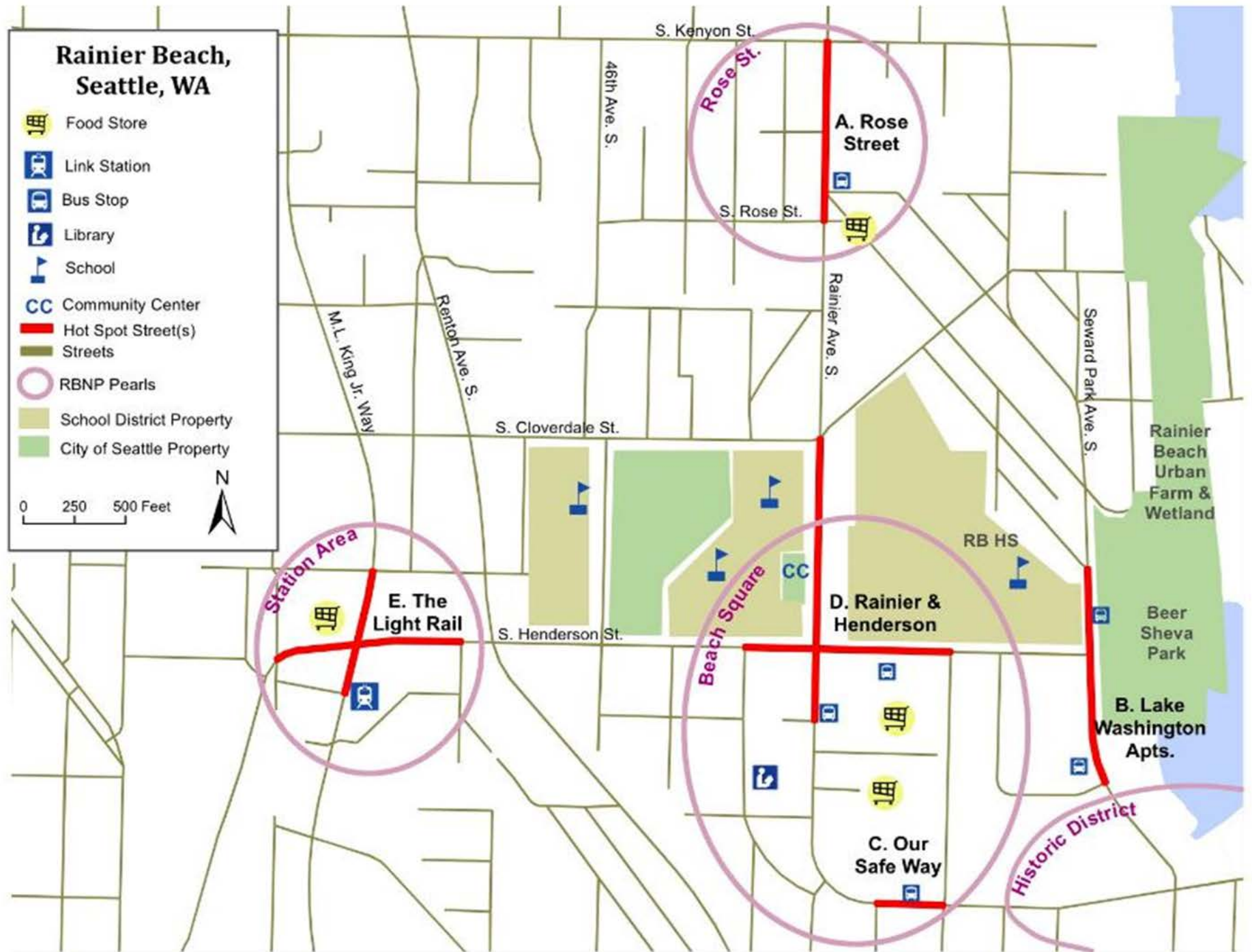
 Streets

 RBNP Pearls

 School District Property

 City of Seattle Property

0 250 500 Feet



The NIJ COMPASS legacy



Photo: Zoe Vltter



Data in the hands of those most affected



Photo: Claudia Gross Shader



Intervention: Guardianship



Photo: Annie O'Neill



Intervention: Guardianship



Photo: Annie O'Neill



Intervention: Physical Environment



Before

- Electrical Work – Exterior Lighting
- Façade Repairs & Exterior Paint
- Fence removal & Install Bollards
- Trash Removal
- Signage

Investment: \$16,652

Match: \$3,060



After

Photos: Barb Biondo



Intervention: Collective Efficacy



Photo: Claudia Gross Shader



Intervention: Change Rules & Policies



Photo: Annie O'Neill



Sustainability through change

Changes in Seattle's South Precinct – 2013 to present

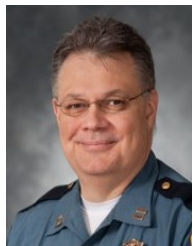


Two Mayors,

Four Police Chiefs,



Eight South
Precinct
Captains



Our “secret sauce”



Photo: Annie O'Neill





Love is in Rainier Beach

See our video:

<https://seattlechannel.org/CityStream/segments/?videoId=X65822>

